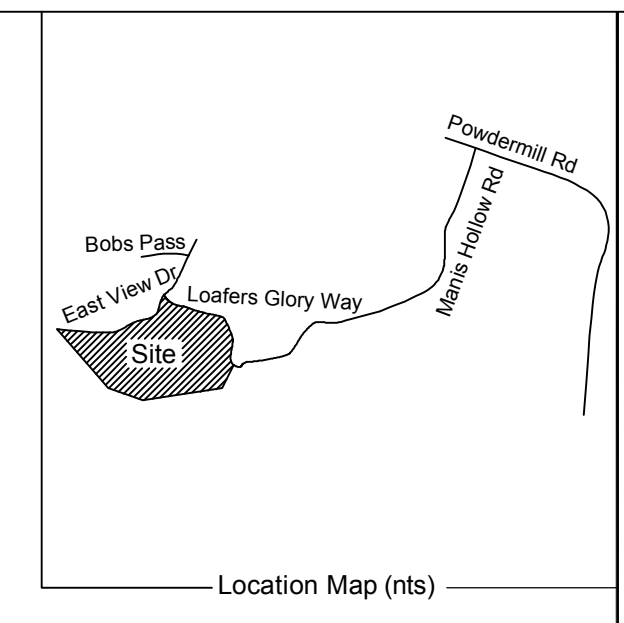
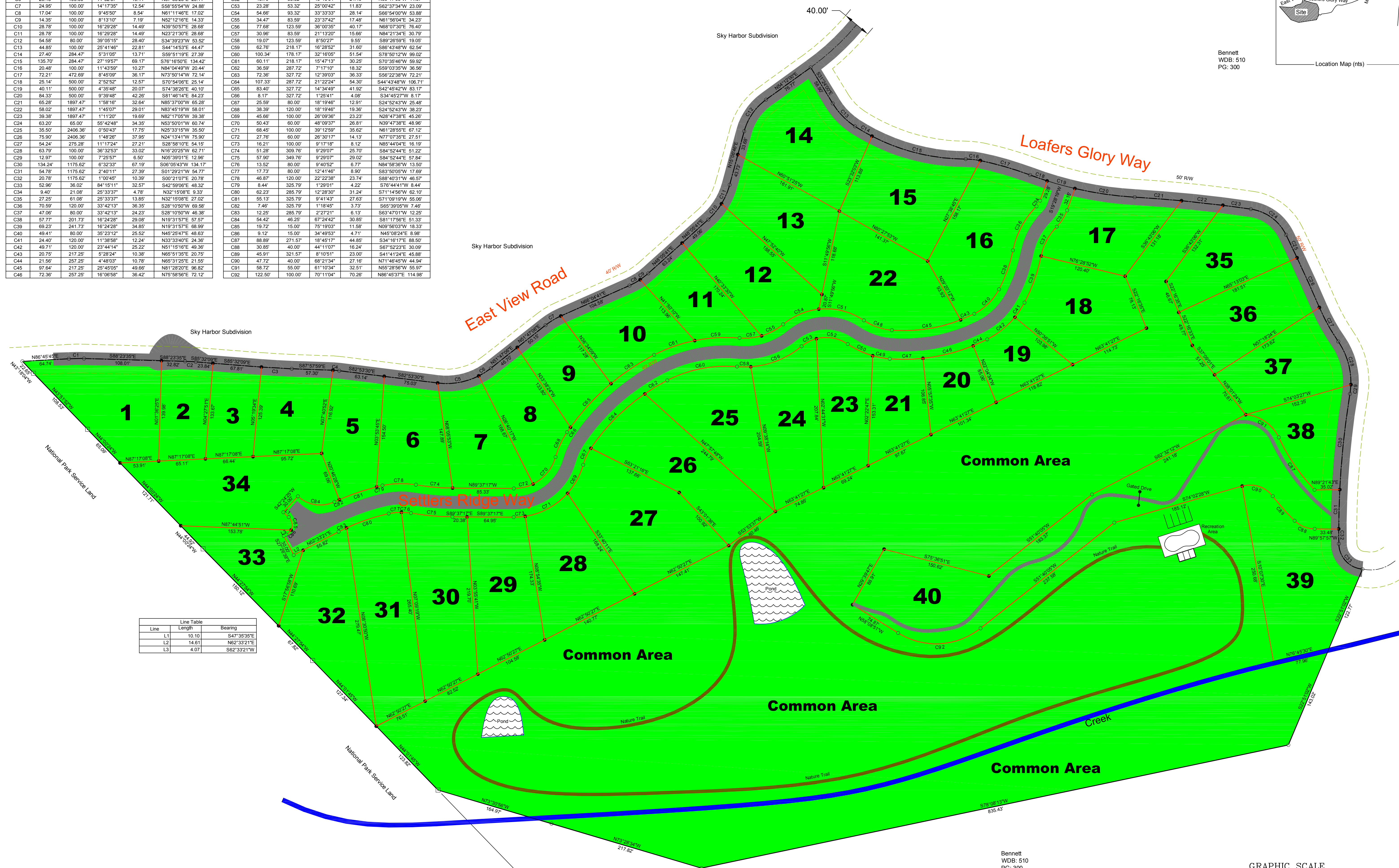


Curve	Length	Radius	Delta	Tangent	Chord
C1	21.14	250.00	4°50'40"	10.58	S89°11'05"W 21.13
C2	14.96	300.00	2°51'25"	7.48	N86°57'52"W 14.96
C3	42.42	1000.00	2°25'49"	21.21	S86°45'04"E 42.42
C4	8.86	100.00	5°02'28"	4.43	N83°25'44"W 8.86
C5	58.96	100.00	33°46'48"	30.36	N80°13'07"E 58.11
C6	20.15	100.00	11°32'37"	10.11	N57°33'25"E 20.11
C7	24.95	100.00	14°17'35"	12.54	S58°55'54"W 24.88
C8	17.04	100.00	9°45'50"	8.54	N61°11'46"E 17.02
C9	14.35	100.00	8°13'10"	7.19	N52°12'16"E 14.33
C10	28.78	100.00	16°29'28"	14.49	N39°50'57"E 28.68
C11	28.78	100.00	16°29'28"	14.49	N23°21'30"E 28.68
C12	54.58	90.00	39°05'15"	28.40	S34°39'23"W 53.62
C13	44.85	100.00	25°41'46"	22.81	S44°14'53"E 44.47
C14	27.40	284.47	5°31'05"	13.71	S59°51'19"E 27.39
C15	135.70	284.47	27°19'57"	69.17	S78°16'50"E 134.42
C16	20.48	100.00	11°43'59"	10.27	N84°04'49"W 20.44
C17	72.21	472.59	8°45'09"	36.17	N73°50'14"W 72.14
C18	25.14	500.00	2°52'52"	12.57	S70°54'06"E 25.14
C19	40.11	500.00	4°35'48"	20.07	S74°38'26"E 40.10
C20	84.33	500.00	9°39'48"	42.26	S81°46'14"E 84.23
C21	65.28	1897.47	1°58'16"	32.64	N85°37'00"W 65.28
C22	58.02	1897.47	1°45'07"	29.01	N83°45'19"W 58.01
C23	39.38	1897.47	1°11'20"	19.69	N82°17'05"W 39.38
C24	63.20	65.00	55°42'48"	34.35	N59°50'01"W 60.74
C25	35.59	2406.36	0°50'45"	17.75	S29°33'15"W 35.50
C26	75.90	2406.36	1°48'26"	37.95	N24°13'41"W 75.90
C27	54.24	275.28	11°17'24"	27.21	S28°58'10"E 54.15
C28	63.79	100.00	36°32'53"	33.02	N16°20'25"W 62.71
C29	12.97	100.00	7°25'57"	6.50	N05°39'01"E 12.96
C30	134.24	1175.62	6°32'33"	67.19	S06°05'43"W 134.17
C31	54.76	1175.62	2°40'11"	27.39	S01°29'21"W 54.77
C32	20.78	1175.62	1°00'45"	10.39	S00°21'07"E 20.78
C33	62.96	36.02	84°15'11"	32.57	S42°59'06"E 48.32
C34	9.40	21.08	25°33'37"	4.78	N32°15'08"E 9.33
C35	27.25	61.08	25°33'37"	13.85	S28°15'08"E 27.02
C36	70.59	120.00	33°42'13"	36.35	S28°10'50"W 69.58
C37	47.06	80.00	33°42'13"	24.23	S28°10'50"W 46.38
C38	57.77	201.73	16°24'28"	29.08	N19°31'57"E 57.57
C39	89.23	241.73	16°24'28"	34.85	N19°31'57"E 88.89
C40	49.41	80.00	35°23'12"	25.52	N45°25'47"E 48.63
C41	24.40	120.00	11°38'58"	12.24	N33°34'40"E 24.36
C42	49.71	120.00	23°44'14"	25.22	N51°15'16"E 49.36
C43	20.75	217.25	5°28'24"	10.38	N65°51'35"E 20.75
C44	21.56	257.25	4°48'03"	10.78	N65°31'25"E 21.55
C45	97.64	217.25	25°45'05"	49.86	N81°28'25"W 96.89
C46	72.36	257.25	16°06'58"	36.42	N75°58'56"E 72.12

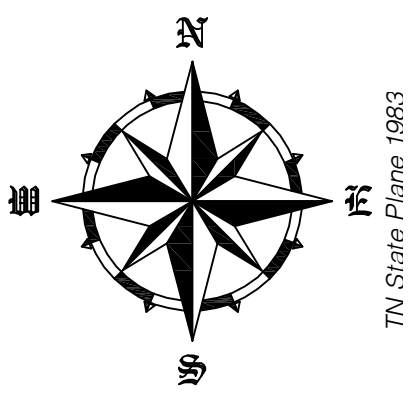
Curve	Length	Radius	Delta	Tangent	Chord
C47	46.28	257.25	10°18'28"	23.20	N89°11'39"E 46.22
C48	41.82	80.00	29°57'07"	21.40	S70°40'34"E 41.35
C49	24.30	120.00	11°36'13"	12.19	S79°51'01"E 24.26
C50	38.43	120.00	18°20'54"	19.38	S64°52'27"E 38.26
C51	66.16	93.32	40°37'13"	34.54	N76°00'37"W 64.79
C52	45.76	53.32	49°10'04"	24.40	N80°17'03"W 44.37
C53	23.28	53.32	25°00'42"	11.83	S62°37'34"W 23.09
C54	54.66	93.32	33°33'33"	28.14	S66°54'00"W 53.88
C55	34.47	83.59	23°37'42"	17.48	N61°56'04"E 34.23
C56	77.68	123.59	36°10'35"	40.17	N68°07'30"E 76.40
C57	30.96	83.59	21°13'20"	15.66	N84°21'34"E 30.79
C58	19.07	123.59	8°50'27"	9.56	S89°26'59"E 19.05
C59	62.76	218.17	16°28'52"	31.60	S86°43'48"W 62.54
C60	100.34	178.17	32°16'05"	51.54	S78°50'12"W 99.02
C61	60.11	218.17	15°47'13"	30.25	S70°35'46"W 59.92
C62	36.59	287.72	7°17'10"	18.32	S59°03'35"W 36.56
C63	72.36	327.72	12°39'03"	36.33	S56°22'38"W 72.21
C64	107.33	287.72	21°22'24"	54.30	S44°43'48"W 108.71
C65	83.40	327.72	14°34'49"	41.92	S42°45'42"W 83.17
C66	8.17	327.72	1°25'41"	4.08	S34°45'27"W 8.17
C67	25.59	80.00	18°19'46"	12.91	S24°52'43"W 25.48
C68	38.39	120.00	18°19'46"	19.36	S24°52'43"W 38.23
C69	45.66	100.00	26°09'36"	23.23	N28°47'38"E 45.26
C70	50.43	60.00	48°09'37"	26.51	N39°47'30"E 48.96
C71	68.45	100.00	39°12'59"	35.62	N61°28'55"E 67.12
C72	27.76	60.00	26°30'17"	14.13	N77°07'35"E 27.51
C73	16.21	100.00	9°17'18"	8.12	N85°44'04"E 16.19
C74	51.28	309.76	9°29'07"	25.70	S84°52'44"E 51.22
C75	57.90	349.76	9°29'07"	29.02	S84°52'44"E 57.84
C76	13.52	80.00	9°40'52"	6.77	N84°58'36"W 13.50
C77	11.73	60.00	12°41'46"	5.89	S83°50'59"W 11.69
C78	46.87	120.00	22°22'38"	23.74	S88°40'31"W 46.57
C79	8.44	325.79	1°29'01"	4.22	S76°44'41"W 8.44
C80	62.23	285.79	12°28'30"	31.24	S71°14'56"W 62.10
C81	55.13	325.79	9°41'43"	27.63	S71°09'19"W 55.06
C82	7.46	325.79	1°18'45"	3.73	S65°39'05"W 7.46
C83	12.25	285.79	2°27'21"	6.13	S63°47'01"W 12.25
C84	54.42	46.25	67°44'42"	30.85	S81°17'58"E 51.33
C85	19.72	15.00	75°19'03"	11.58	N09°56'03"W 18.33
C86	9.12	15.00	34°49'53"	4.71	N45°08'24"E 8.98
C87	88.89	271.57	18°45'17"	44.85	S34°16'17"E 88.50
C88	30.85	40.00	44°11'07"	16.24	S67°52'23"E 30.09
C89	45.91	321.57	8°10'51"	23.00	S41°41'24"E 45.88
C90	47.72	40.00	68°21'34"	27.16	N71°46'45"W 44.94
C91	58.72	60.00	61°10'34"	32.51	N55°28'56"W 58.97
C92	122.50	100.00	70°11'04"	70.26	N86°45'37"E 114.88

Line	Length	Bearing
L1	10.10	S47°35'35"E
L2	14.61	N62°33'21"E
L3	4.07	S62°33'21"W



Contact:
 Matt Niles, Local PLO
 528 Trilling, TN 37876
 (865) 774-6871

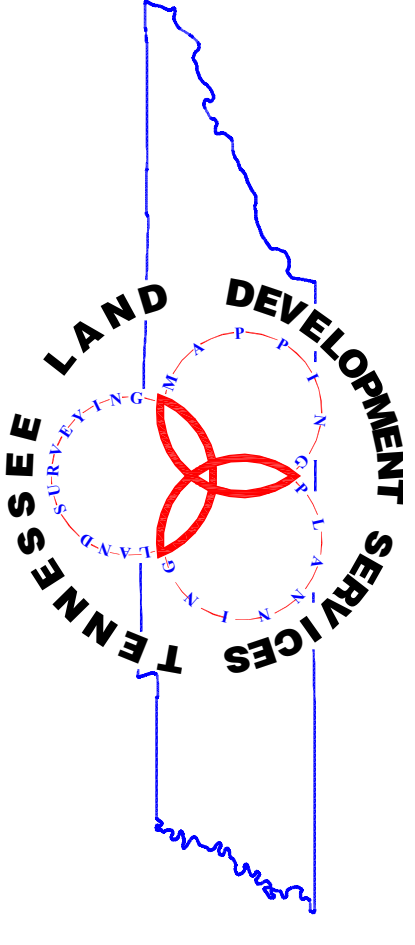
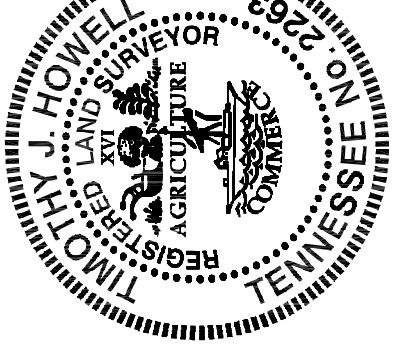
Showing property of Bennett located in the 10th civil district of Sevier County, Tennessee. For more information, please contact the local PLO.
 Tax Map 007 PLO Parcel 90, Map B, 28, Pg. 254
 October 27, 2006 Revised November 2, 2006
 Scale: 1" = 60'



Note:
 ● Existing Iron Pin
 ● Set '88' Iron Pin
 ○ Calculated Point
 ○ Other
 Building Footprints
 Building Footprints
 Total Land Area = 23.67 acres
 Unit Areas exclude roads

Settler's Ridge
 a Group Development

Timothy J. Howell, RLS 2263, (865) 742-2557
 Thomas M. Haehn, (865) 386-6885
 Julie E. Sexton, (865) 621-1010
 227 Court Avenue, Sevierville, TN 37862



Bennett
 WDB: 510
 PG: 300

